



THOMSON REUTERS  
FOUNDATION



TRUSTLAW



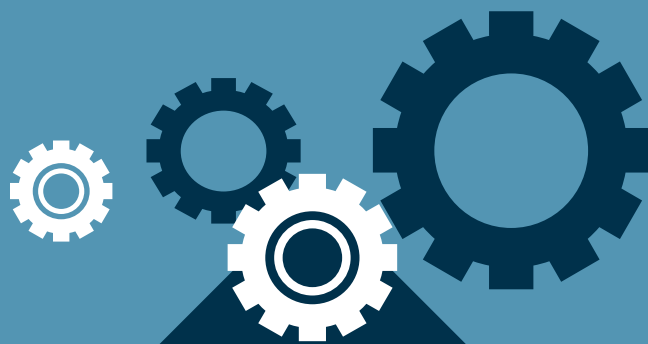
## WHAT WE DO

---

TrustLaw connects the world's leading legal teams with high-impact NGOs and social enterprises working to create social and environmental change. We help produce groundbreaking legal research and offer innovative training courses worldwide.

We have supported grassroots organisations to employ their first staff members, helped vulnerable women access loans to start their first businesses and brought renewable energy lighting to slums. Free legal assistance on these projects has made a significant impact on local communities working to overcome poverty and discrimination.

We are the largest global pro bono network with over **5,000** members across more than **175** countries. We work with hundreds of legal teams representing over **120,000** lawyers who generously provide free legal support to thousands of NGOs and social enterprises.



## WHY TRUSTLAW?

---

TrustLaw was created to spread the practice of pro bono to drive social change.

Our free legal service enables NGOs and social enterprises to streamline operations, expand into new countries and scale their impact. This helps them to focus on their mission without spending valuable resources on their legal needs.

Our research programmes are powerful advocacy tools that enable TrustLaw's NGO and social enterprise members to achieve unprecedented legal and policy reforms and improve the rule of law.





## HOW IT WORKS

TrustLaw is a completely free service:  
Go to [trustlaw.trust.org](https://trustlaw.trust.org) and get started  
in a few clicks.

Once members, NGOs and social enterprises  
can request free legal support, and lawyers  
can volunteer to work on projects that  
interest them.





## TYPES OF LEGAL SUPPORT

NGOs and social enterprises can apply for free legal assistance in a variety of areas including:

- **Structuring:** Selecting the right legal entity for your NGO or social enterprise.
- **Staffing:** Employment and volunteer agreements.
- **Advocacy:** Research on laws in multiple countries, comparing best (and worst) practices.
- **Funding:** Partnership or funding agreements.
- **IP and brand protection:** Trademark registration, copyright, patents and licensing.

We also run a series of workshops, webinars and other capacity-building initiatives to provide practical guidance on these legal issues.







## RESEARCH AND PUBLICATIONS

---

Our research has supported advocacy efforts to combat sex discrimination, changed laws to protect domestic workers in the Philippines, improved policies to help diagnose HIV/AIDS, and crafted tools to deliver justice for victims of human trafficking and slavery.

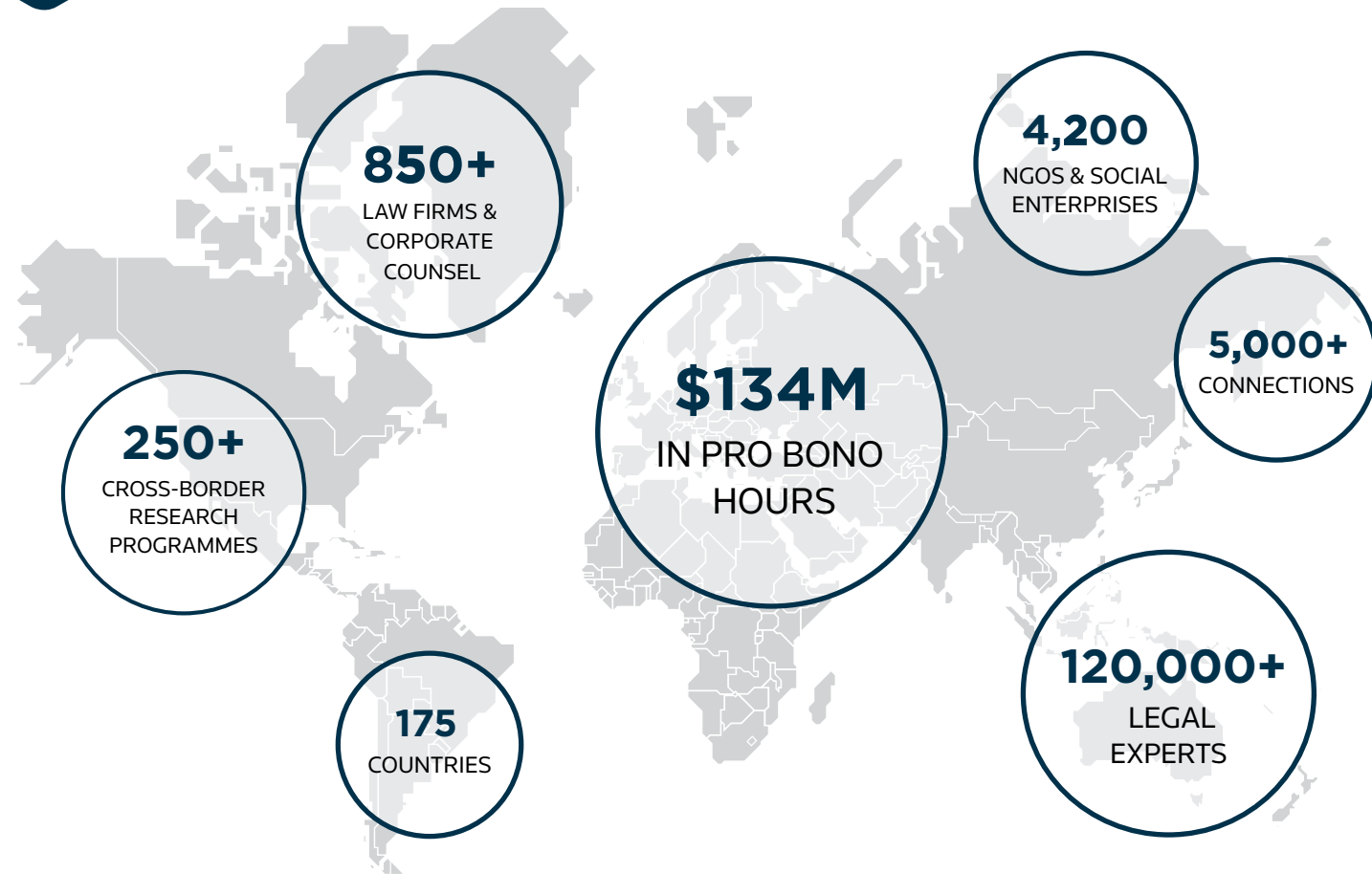
Our research programmes often compare and analyse laws across a number of jurisdictions to highlight best practices and identify areas for reform.

We have also produced a number of “how-to” guides to help non-profits and social enterprises to choose the right structure and understand ongoing governance issues.





## OUR IMPACT



REUTERS:FINBARR O'REILLY



## REGISTERING & COMMERCIALISING YOUR IP

Microsoft's in-house counsel and Ashu Thakur & Associates partnered with Bempu Health, an Indian social enterprise, to help register an innovative temperature monitoring bracelet designed to detect neonatal hypothermia. The pro bono assistance allowed for the early commercialisation of the device and its distribution to hundreds of healthcare centres, supporting BEMPU's mission to reduce child mortality in India.

## FUNDING AGREEMENTS & OPERATIONAL EXPANSION

Norton Rose Fulbright South Africa advised on a loan and mortgage agreement for Zip Zap, an NGO using circus training as a tool for youth empowerment and social transformation. This helped Zip Zap to move premises and expand its operations, allowing them to reach more young people.



## TAX & SOCIAL INVESTMENT ADVICE

Weil, Gotshal & Manges provided tax and social investment structuring advice to Micro Rainbow International (MRI), a social enterprise supporting LGBTI communities worldwide. This advice was crucial in helping MRI with their LGBTI refugee housing project, enabling them to structure their fundraising efforts so that they are eligible for the Social Investment Tax Relief scheme.



## URGENT LEGAL SUPPORT TO ADDRESS EUROPEAN REFUGEE CRISIS

Latham & Watkins led a group of lawyers, consultants and academics across 12 countries to produce urgent legal advice for the International Rescue Committee in response to the European refugee crisis. Spanning twelve jurisdictions, the legal research on border control, asylum and refugee resettlement was used to inform local advocacy work in Greece and influence policy at the intergovernmental level.



## STRONGER PROTECTION FOR LGBT YOUTH IN THE US

TrustLaw connected LGBT rights NGO, Equality Illinois and Kirkland & Ellis to work towards barring gay conversion therapy for LGBT youth in Illinois. In May 2015 the Youth Mental Health Protection Act was passed, banning the practice of conversion therapy on minors in Illinois.





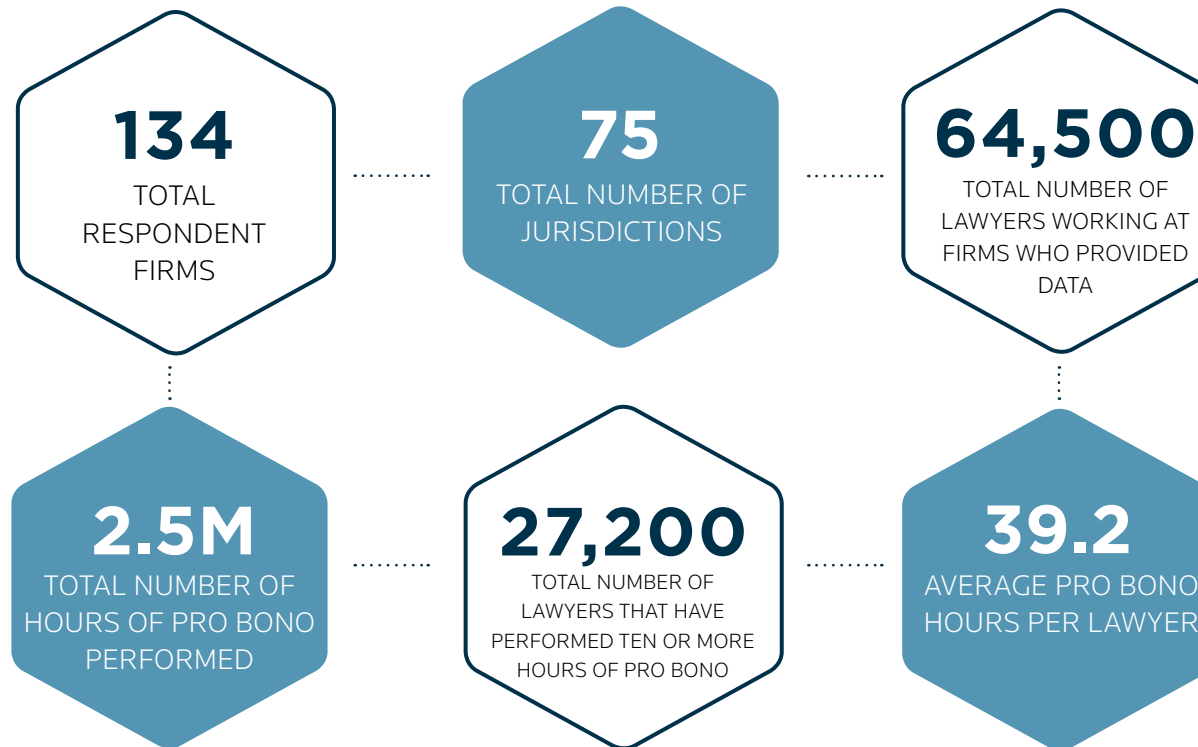
## TRUSTLAW INDEX OF PRO BONO

The TrustLaw Index of Pro Bono is the first global survey identifying how much pro bono work is done by law firms across the world. The Index, created in 2014, is an invaluable tool to help spread the practice of pro bono by highlighting successful pro bono programmes and by providing benchmarks on pro bono participation in different jurisdictions.

By mapping the scale and trends of the pro bono legal sector internationally, the Index offers firms – large and small – a unique resource to help build robust pro bono practices, and to understand how to get the greatest impact from their pro bono work.

Visit [trustlawindex.trust.org](https://trustlawindex.trust.org) for more information.

## 2016 INDEX OF PRO BONO HIGHLIGHTS





## TRUSTLAW TRAINING

We run a series of accredited legal training courses on social enterprise and impact investing. The courses focus on legal issues and trends in the burgeoning social innovation sector, and provide lawyers and professionals in the sector with the skills and knowledge they need to advise key stakeholders.

Through a mixture of lectures, panel discussions and interactive workshops, attendees will gain an in-depth understanding of the latest trends and key legal issues facing the sector, including:

- Structuring advice for social enterprises
- Legal challenges faced by impact investors and investees
- Different funding models including social impact bonds and crowd-funding

Visit [trustlawtraining.trust.org](https://trustlawtraining.trust.org) for more information.







## TRUSTLAW AWARDS

---

The TrustLaw Awards is an annual ceremony to celebrate the groundbreaking pro bono projects undertaken by legal teams with NGOs and social enterprises around the world.

Each year we award three outstanding pro bono projects, in addition to the international firm, domestic firm, in-house legal team of the year and the esteemed lawyer of the year award.

Visit [trustlawawards.trust.org](https://trustlawawards.trust.org) for a list of past winners.

# OUR LOCATIONS





## CONTACT US

---

### **General enquiries**

[trustlaw@thomsonreuters.com](mailto:trustlaw@thomsonreuters.com)

[trustlaw.trust.org](http://trustlaw.trust.org)

+44 20 7542 0240

Front cover picture: REUTERS/THIERRY GOUEGNON

Thomson Reuters Foundation Inc. is a registered not-for-profit organization under section 501(c) (3) of the IRS code.  
Federal Tax ID # 13-4192037. Thomson Reuters Foundation Inc. retains full control and discretion over the use of funding.