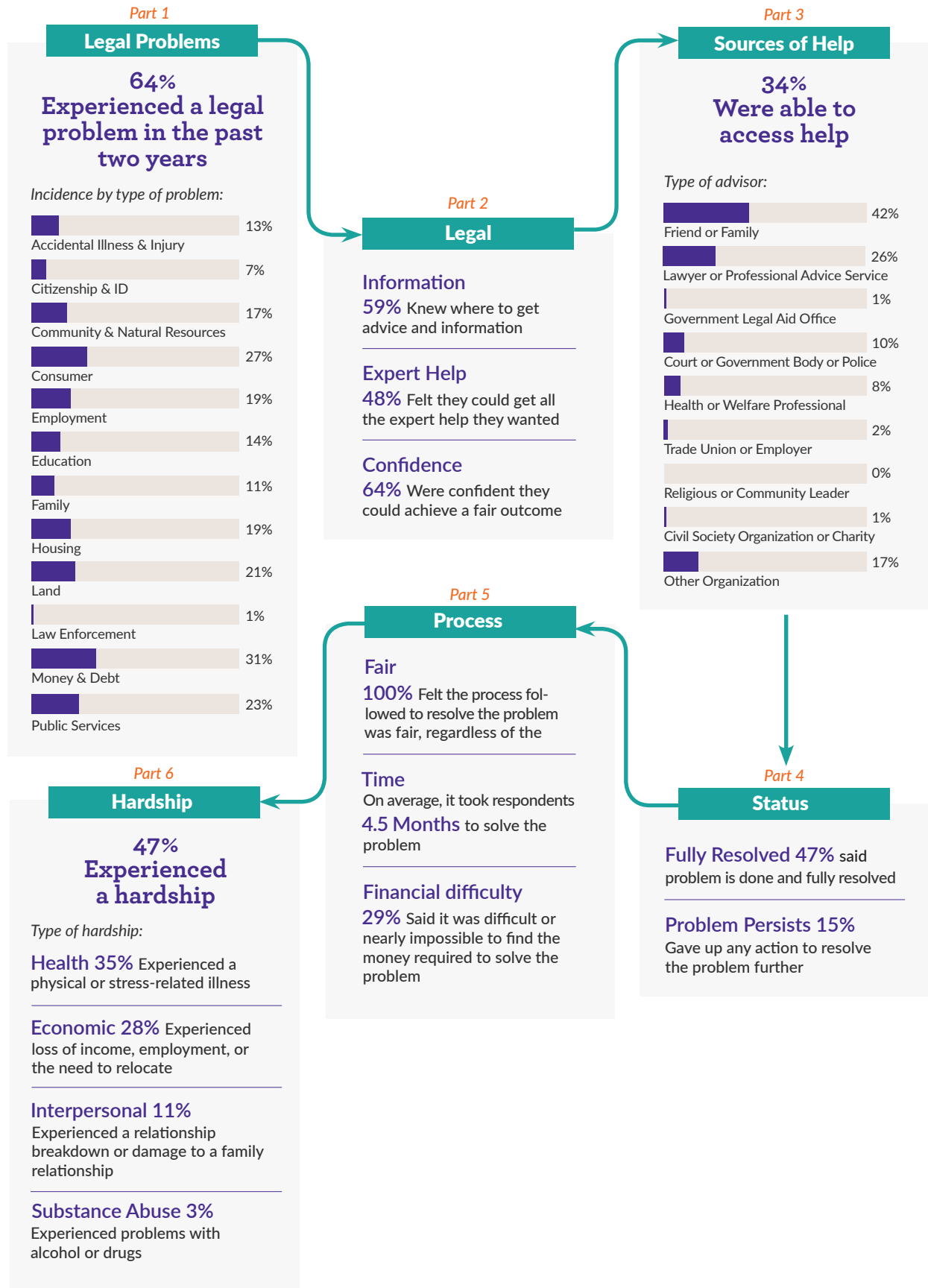




# Mongolia

Paths followed by people in Mongolia to deal with their everyday justice problems, summarizing the incidence of legal problems, respondents' legal capability, access to sources of help, problem status, assessment of the resolution process, and problem impact.



Source: World Justice Project, 2017 General Population Poll survey module on legal needs and access to justice. Data collected by Mongolian Marketing Consulting Group LLC using a probability sample of 1000 respondents in the three largest cities of the country.